

	Issuing Entity: Wadkins Expo Wheel, Inc. 11501 Sherwood Road Upper Falls, Maryland 21156 443-463-8016 443-463-1637 <a href="mailto:wadkinsexpowheel@yahoo.com">wadkinsexpowheel@yahoo.com</a>	Bulletin No.: 2013-1
		Release Date: January 3, 2014
		Effective Date: January 3, 2014
		Supersedes: N/A
		Completion Date: Immediate testing to be completed before resuming public operation
		Page: 1 of 5

# SAFETY ALERT

Ride Manufacturer: Wadkins Expo Wheel, Inc. Expo Wheels, LLC Childress Manufacturing	Affected Production Dates: 1996-2009
Ride Name: Expo Wheel	Affected Serial Nos.: All before 2010
Model Number: All with bronze-bushing axles	
<p><b>Abstract Of Issue:</b> All Expo Wheels with original bronze-bushing axles must be ultrasonic tested. Cracks may occur next to welds behind flange or behind the 8 bolts on main axle.</p> <p><b>Reason For Release:</b> Wadkins Expo Wheel, Inc., has been made aware of an Expo Wheel on which the axle has cracked. The effect may occur in or out of plain sight. If this occurs, do not operate the Expo Wheel.</p> <p><b>WARNING: FAILURE TO COMPLY WITH SAFETY ALERT CAN RESULT IN INJURY TO PASSENGERS OR OPERATORS.</b></p> <p>Wadkins Expo Wheel, Inc., issues notifications for the benefit of owners of amusement rides manufactured by Wadkins Expo Wheel, Inc. As a service to the industry, and in the interest of employee and public safety, Wadkins Expo Wheel, Inc., also may issue notifications for the benefit of owners of amusement ride equipment for which the manufacturer no longer exists, such as Expo Wheels, LLC, and Childress Manufacturing. In doing so, Wadkins Expo Wheel, Inc., does not assume liability for losses associated with amusement ride equipment built or modified by these or any other manufacturers of amusement equipment.</p>	
<p><b>Action To Be Taken:</b> All Expo Wheels with original bronze-bushing axles must be ultrasonic tested immediately. Thereafter, ultrasonic testing should be done annually or</p>	

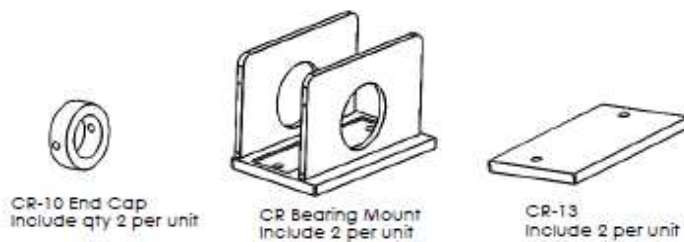
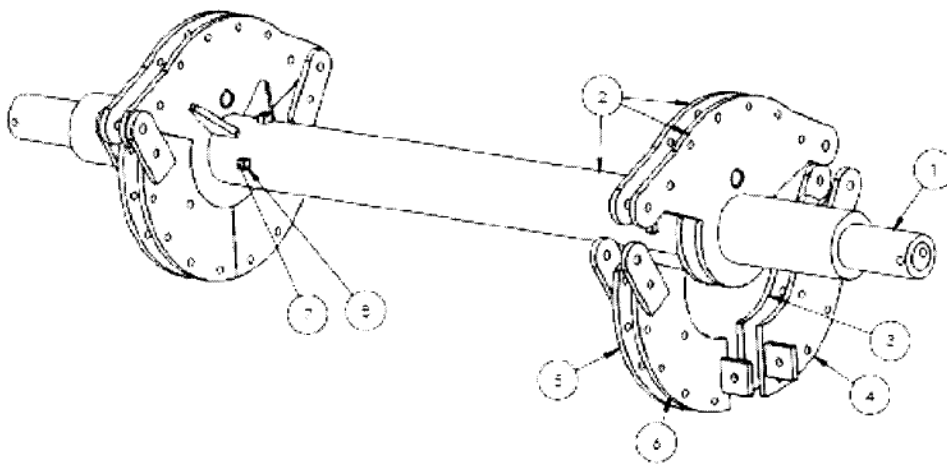
every 1000 hours of operation.

**Detail Of Issue:**

**IMMEDIATE TESTING**

Each Expo Wheel with an original bronze-bushing axle must have the entire axle ultrasonic tested immediately by an outside, licensed firm. The main axle is identified as Item No. 1 in Diagram 1.

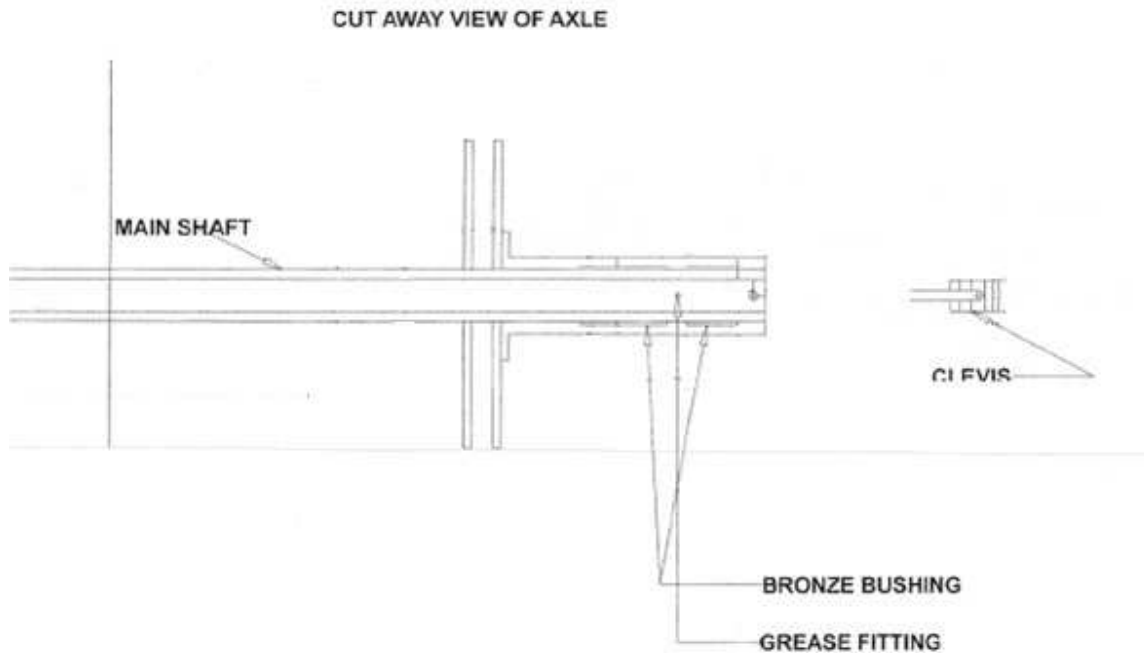
Diagram 1 –



ITEM NO.	PART NUMBER	DESCRIPTION	Default/ QTY.
1	CR-01	Rnd Tube	1
2	CR Weldment		1
3	CR Inner Plate	Weldment	2
4	CR Outer Plate	Weldment	2
5	MirrorCR Inner Plate		2
6	MirrorCR Outer Plate		2
7	91410A843	Sq Hd Cup Point Set Screw	4
8	CR-09	12ga. C.S.	4

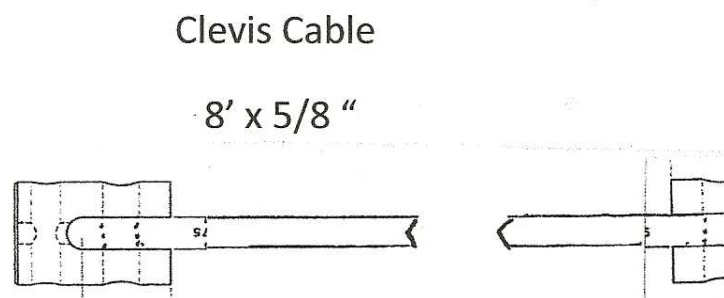
Diagram 2 shows the location of the bronze bushings.

Diagram 2 –



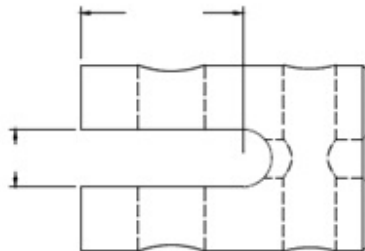
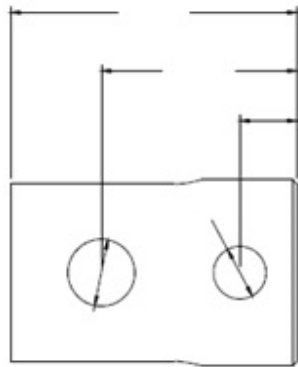
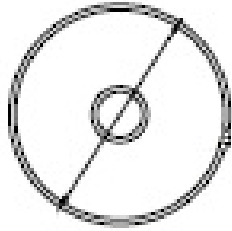
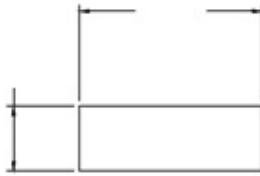
If the axle *passes* the ultrasonic testing, install a safety cable through the center of the axle. Attachment of the clevis cable is shown in diagram 3.

Diagram 3 –



Clevis pin material is shown in diagram 4.

Diagram 4 –



If the axle does *not pass*, it is recommended that the axle be replaced as specified below with the new style axle with pillow block bearings. If there is any question whether the axle passes, please contact the factory.

#### **FUTURE TESTING**

Ultrasonic testing of the original bronze-bushing axle should be repeated annually or every

1000 hours of actual load-bearing operation, whichever comes sooner. The response for passing or failing this testing is the same as outlined above for the immediate testing.

### **REPAIR AND REPLACEMENT**

**All parts for any repairs, as well as the repairs themselves, are to be supplied and performed by manufacturer at its factory. Only factory parts to be installed.** All parts will be available through Wadkins Expo Wheel, Inc.

**UNDER NO CIRCUMSTANCES SHOULD THE ORIGINAL AXLE BE WELDED ON AT ANY TIME. AXLES THAT DO NOT PASS ULTRASONIC TESTING NEED TO BE REPLACED. CONTACT WADKINS EXPO WHEEL, INC., TO HAVE YOUR AXLE REPLACED.**