

Ferris wheel -



Issuing Entity:
Technical Park s.n.c. di Martini
Fabio e C
Via dell'Artigianato 47
45037 Melara (RO) - Italy
Ph. +39 0425 89276
Fax +39 0425 89645
www.technicalpark.com
info@technicalpark.com

Bulletin No: SAB-001
Release Date: 2013-08-19
Effective Date: 2013-08-19
Supersedes: Not applicable
Completion Date: 2013-08-19

Page: 1 of 2

SAFETY ALERT

Ride Manufacturer: Technical Park Affected Production Dates: from year 2001 to 2013

Ride Name: Ferris Wheels from 20m to 40m travelling version and park model

Model Number: 21.00.00, 22.00.00, 36.00.00, 37.00.00, 39.00.00, 40.00.00, 41.00.00, 57.00.00, 72.00.00, 75.00.00, 82.00.00, 104.00.00, 105.00.00

Abstract of issue: check the status of the support hubs of the gondola arms, check of the proper tightening of the setscrew see pos. 2, check of the proper functioning of the bearings see pos. 3 CHECKING OF THE INTEGRITY AND OF THEIR CORRECT STATE OF MAINTENANCE (the all with reference to the Figure shown at the point "Detail of issue" of this bulletin)

Reason For Release:

Risk of failure of a component due to the POOR, OMITTED OR WRONG maintenance. Despite in the use and maintenance manual is shown the need to check all the bolts every 15 days, it was found that in many cases the controls ARE NOT CARRIED OUT OR ARE TAKEN IN AN INAPPROPRIATE WAY AND NOT IN-ACCORDANCE WITH THE DISPOSITIONS OF THE USE AND MAINTENANCE MANUAL. It was also found that the lubrication is not done or is not complied with the frequency reported in the use and maintenance manual instructions, causing an anticipated deterioration of the bearing and increasing the risk of loosening of the setscrew pos. 2.

Action To Be Taken: (Inspection, Modification, Replacement, NDT, Order Parts, Manual Revision, Procedural Change, etc.).

IT IS RECALLED THAT THE CONTROL AND MAINTENANCE INSTRUCTIONS CONTAINED IN THE USE AND MAINTENANCE MANUAL ARE IMPERATIVES AND, IF NOT IMPLEMENTED, MAY CAUSE SAFETY RISKS. BETWEEN THESE OPERATIONS ARE INCLUDED BY WAY OF EXAMPLE BUT NOT LIMITED TO, THOSE DESCRIBED BELOW AND PURPOSE OF THIS COMMUNICATION.

NB: operations to repeat on each gondola every 15 days

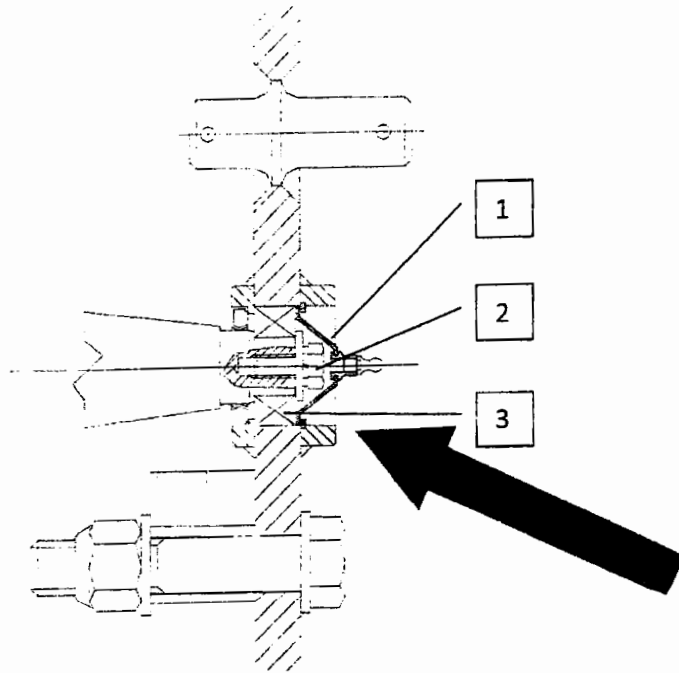
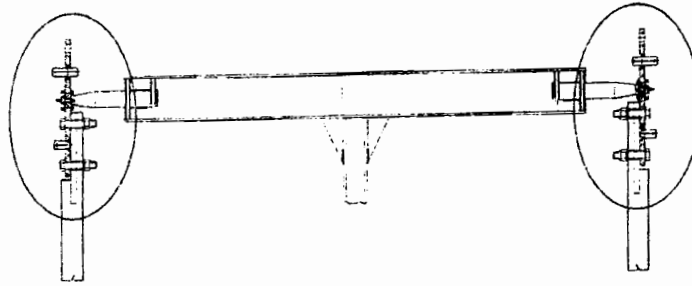
- 1) Remove the cover pos. 1 (see point A or point B depending on the type of Ferris Wheel).
- 2) Check if the screw pos. 2 is loose, if there is the presence of rust, if the bearing pos. 3 presents abnormal games or signs of wear, if the lubrication and the presence of grease are adequate.
- 3) If you find anomalies or if in doubt contact Technical Park to define in detail any eventual further checks to be performed.
- 4) The staff responsible must prepare a report of intervention of the checks carried out, complete with photographic images.
- 5) A copy of the report referred above should be sent to Technical Park within 8 days of receipt of this bulletin by certified email or by regular mail assured.

IS REQUIRED TO ALL RECEIVERS TO MAKE THE CHECKS, THE INSPECTIONS AND THE MAINTENANCE AS PER THE MANUAL GIVING IMMEDIATE NOTICE TO THE CONSTRUCTOR FOR ANY EVENTUAL ANOMALIES FOUND.

THIS SAFETY ALERT BULLETIN MUST BE KEPT TOGETHER WITH THE USE AND MAINTENANCE MANUAL.

Detail of Issue:
(Text/Drawings/Schematics)

A) For Ferris Wheels of 20 mt., 25 mt, 28 mt. for park model



B) For Ferris Wheels 28 meters for travelling model, 32 meters for travelling model , 34 meters for park model, 40 meters for park model.

