

SERVICE BULLETIN

Affected Park:
Affected Ride: INVERTED COASTER
Ride Name:

Item: Steel brake pad
Retaining bolts of the steel brake pad

Abstract of Issue:

Inspection of the steel brake pads and retaining bolts as per drawing on page 2.

Reason for Release:

Cracks were discovered on the second steel brake pads of the pilot coach in the transition area between chamfered and straight section.

Actions to be taken:

- visual and magnetic particle inspection of the steel brake pads in the area shown in the drawing on page 2. The Steel brakes pads presenting indications must be replaced.
- visual inspection and torque inspection of the retaining bolts.

Schedule:

Steel brake pads:

- Visual inspection: immediately.
- Magnetic particle testing: within a week.

Retaining bolts:

- Visual inspection and torque inspection.

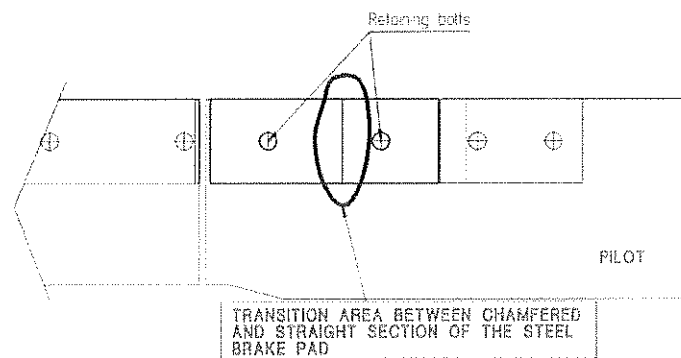
Additional request for maintenance:

The area between chamfered and straight section of the steel brake pad shall be checked as follows:

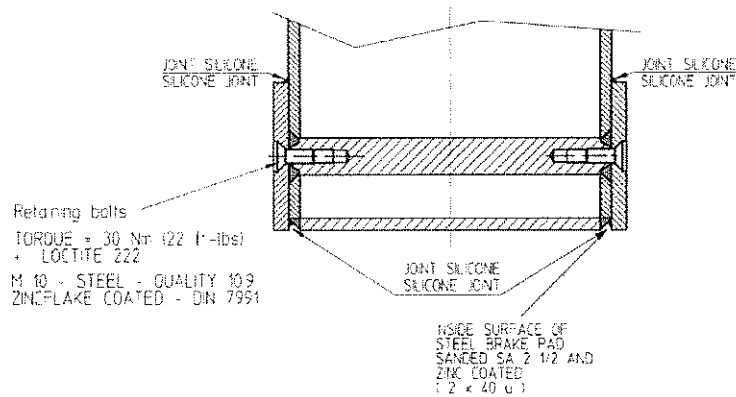
- Visually: every month.
- magnetic particles: annually.

SERVICE BULLETIN

Inverted Coaster (pilot car)



⇨ DIRECTION OF MOTION ⇨



- Note:**
- the retaining bolts for steel brake pads are M10 hexagon socket countersunk head screws according to DIN 7991:
 - fully threaded
 - material: steel – quality 10.9
 - surface treatment: 3 zincflake coated (Dacromet)
 - recommended torque: 30 Nm (22 ft-lbs)
 - the contact surfaces between the steel brake pad and the beam must be clean and free of grease / oil
 - silicon joint must be applied after assembly.