



NUMBER: B387R1099-0

DATE: MAY 24, 1991

SUPERSEDES:

SERVICE BULLETIN

Effective Serial Number: All Units - Chance Rides, Inc.

All Units - Chance Manufacturing Co., Inc.

Chance Rides, Inc. SPECIFICALLY DISCLAIMS ANY LIABILITY for losses associated with rides produced by Chance Manufacturing Company, Inc.

Ride: SEA DRAGON

Subject: Lap Bar Air Pressure

Chance Rides, Inc. has had reports of the bottom mounting eye of the lap bar air cylinders breaking. These cylinders activate the lap bar locks. The breaks occur at the point where the cylinder is pinned to the seat frame. All owner/operators of SEA DRAGON amusement rides are required to visually inspect the air cylinder attaching points for cracks. If any cracks in the cylinder attaching points are found, the cylinder must be replaced. This inspection must be done on an annual basis

If any cylinders have been replaced, due to either the above inspection or due to previous breakage in this area, adjustment to the air pressure may be required. It has been determined that failure of the cylinders may be due to improperly regulated air pressure. The air pressure at the boat should not exceed 45 psi.

All work must be performed by qualified personnel, capable of understanding the function of the parts and their proper installation.

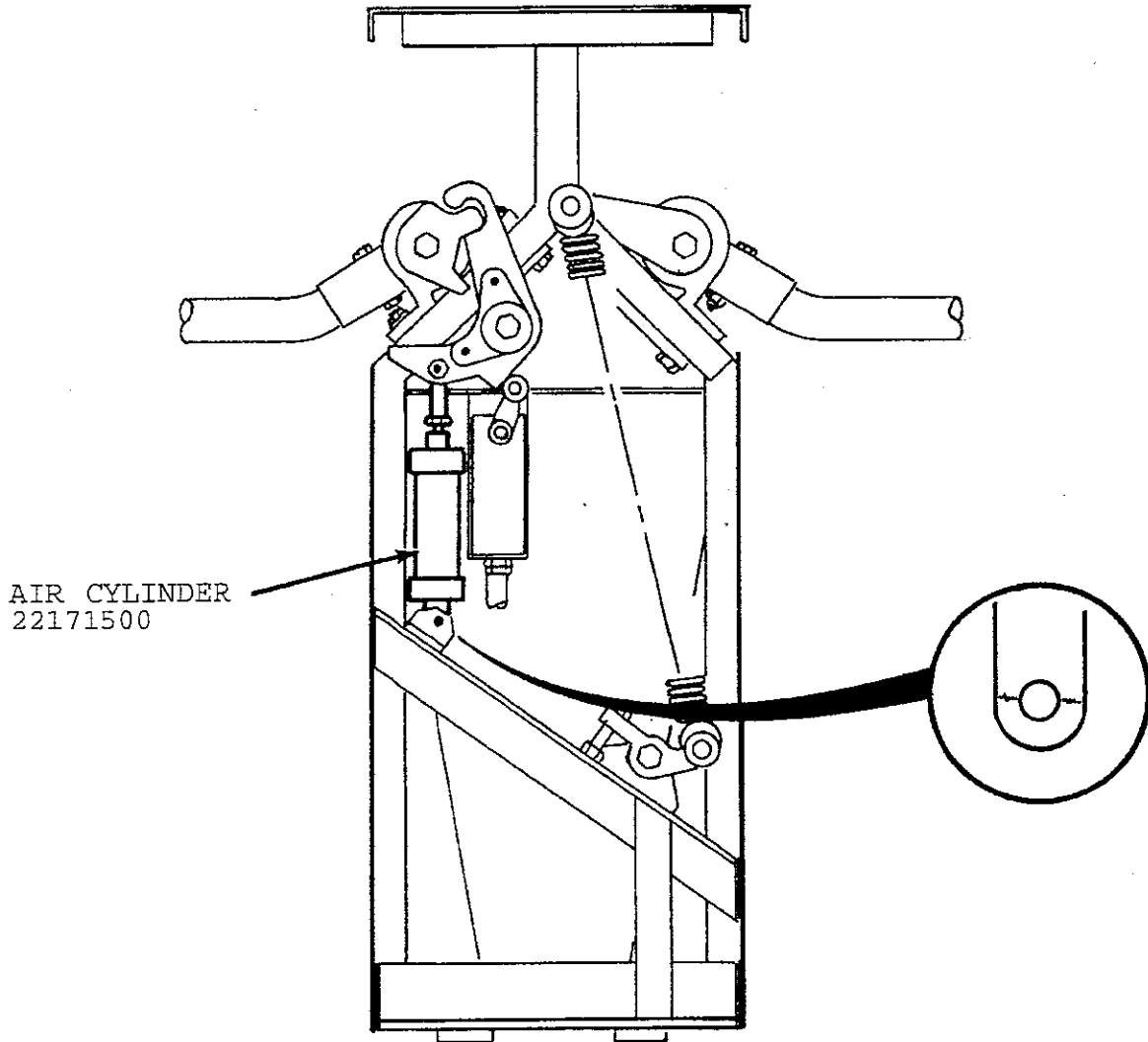
NOTICE

Use only those components authorized, specified or provided by Chance Rides, Inc.

Chance Rides, Inc. SPECIFICALLY DISCLAIMS ANY LIABILITY for losses associated with any unauthorized alterations and/or modifications or additions and installations of unauthorized components.

AIR CYLINDER INSPECTIONS

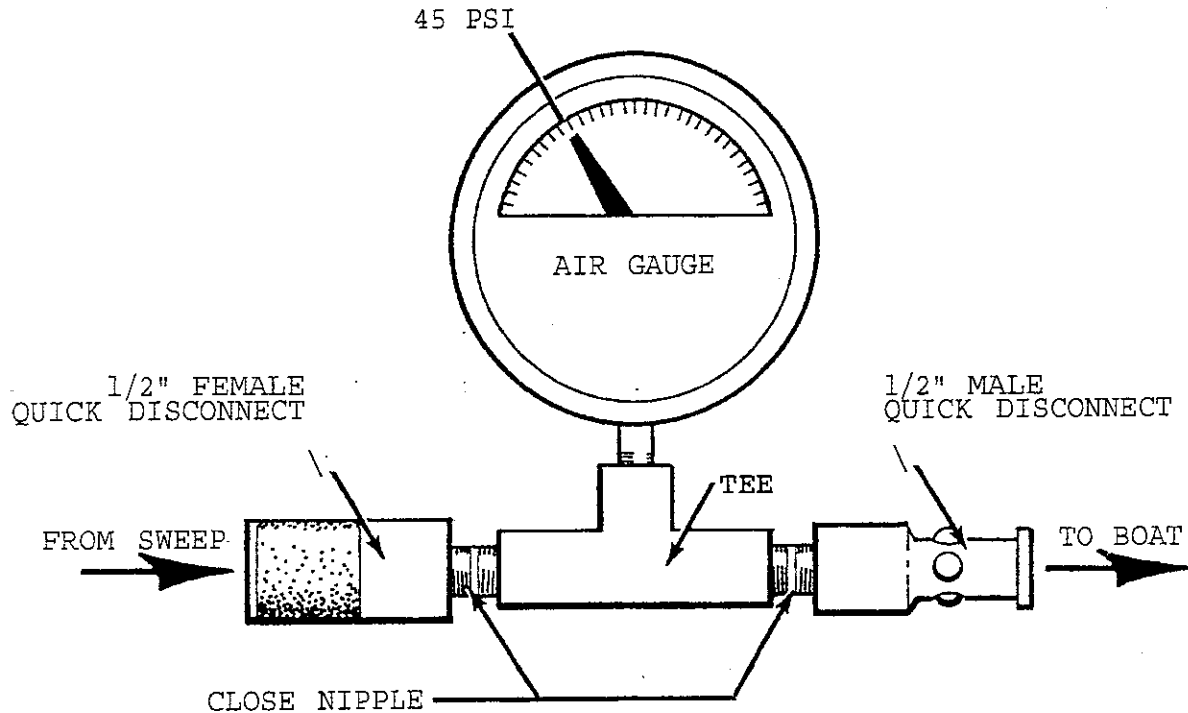
NOTE: Lap bars must be in the up position and air cylinders unpinned at bottom in order to perform inspection. Cylinder must be repinned before operating ride.



SAMPLE GAUGE INSTALLATION

If regulation of air pressure is required the following instructions can be followed in order to determine the air pressure at the boat.

Connect one side of air gauge to the quick disconnect in the back side of the boat. Connect the air line coming down the sweep to the other side of the gauge.



NOTE: Do not operate ride with this gauge connected to the boat. Remove gauge and reconnect air line to boat before operating ride.