

## Customer Support

**Maurer Rides GmbH**  
Frankfurter Ring 193  
80807 Munich

### Service Bulletin 001/08

August 2008

Ride: X-Car  
Module: Connection Bar

For one of our customers, we performed maintenance and service works on an X-Car train at our Munich-based plant in March 2008. This car is used in one of our Sky Loop installations. In the course of the overhaul we also carried out the NDT tests on the connection bars, prescribed by us to be done at regular intervals.

These tests detected a crack having formed at the tube end, as shown on the picture below. This crack has been reconditioned professionally. At the same time, we searched for the cause of the crack and finally found that the tolerances regarding the play in the sliding bushings were exceeded considerably.

It cannot be excluded that the connection bars in your system present the same problem. We would like to take this occasion to refer you once more to our maintenance instructions, where you will find both the prescribed tolerances and the inspection periods for the NDT test under section "Maintenance/Service". Again, we would like to urgently point out that these instructions and inspection periods must be observed, to prevent such cases of damage and to detect them in due time.

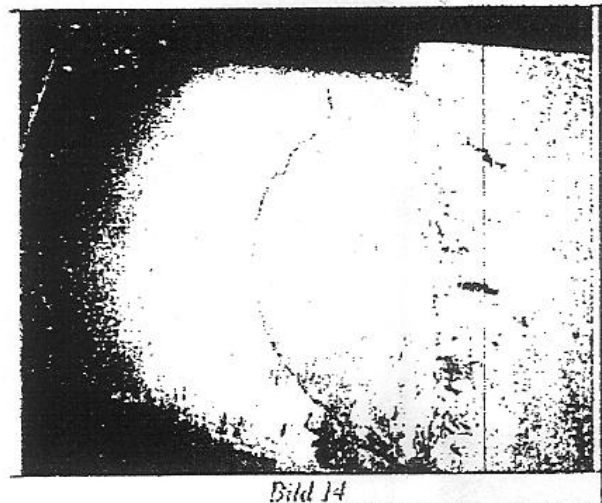
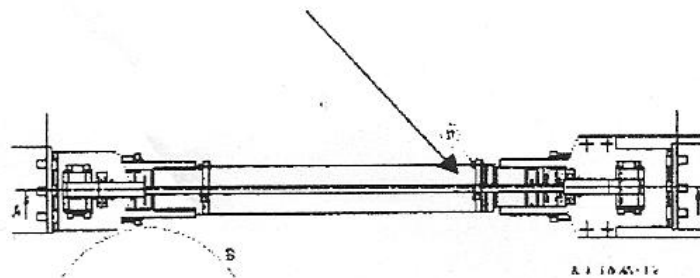


Bild 14

Munich, 1st August 2008

Guido Bauerle  
Manager Customer Support