



Date; 19-3-2014.

To all,

For your information, defects as below found on a number of mini Miami rides , manufacture ; danum uk / f stokes.



1) general overview of device.

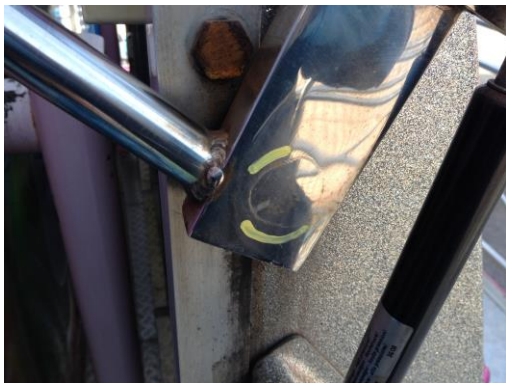


locator peg.

2) weld/ material defect found on lap bar lock



3) weld defect lap bar control arm right hand side, protective padding is required to be partially removed for access.



4) weld/ material defect, lap bar left hand side control arm, outside (connection between control peg & stainless box section).

After speaking with the controller & witnessing operation of the device, it appears the lap bar is release via the control pedal & electric switch situated on the left hand side of the gondola , the opening / closing procedure I believe is contributing to the twist and uneven locking due to the length of the lap bar & containment issue which prevents opening / closing from the central position, I have advised the controller to visually monitor the area as part of the weekly inspections, and report any further defects.

Regards ; paul geary.

adips/naflic inspection body